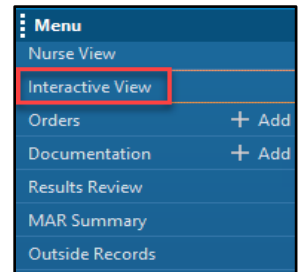


Overview

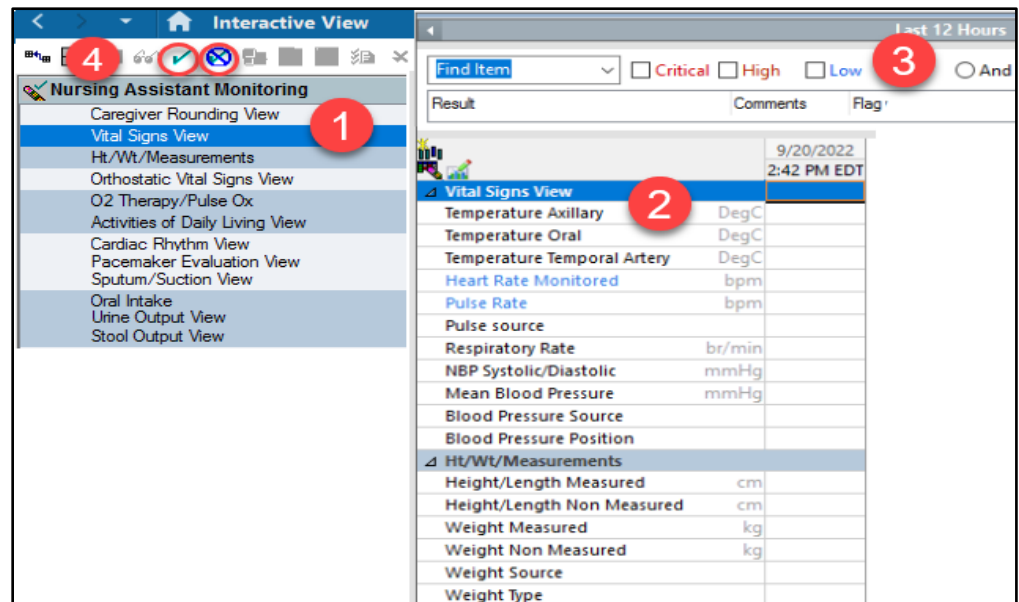
Interactive View (IView) is a section in PowerChart that allows healthcare team members to document and view patient data in a single area.

- Users can open by clicking on Interactive View on the menu in the patient's chart.



There are four sections in IView.

1. Navigator.
2. View pane.
3. Filter.
4. Toolbar where users can:
 - Sign charted data.
 - Cancel charted data.



Navigator

The navigator is made up of bands and sections.

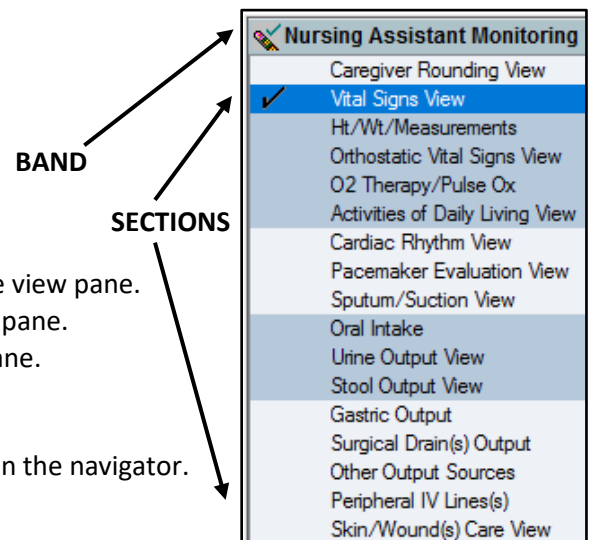
- Click the band to open to the default view in the view pane.
- Click the section to open a specific category in the view pane.

The navigator sections are color coded.

- Dark blue: the section is open and displaying at the top of the view pane.
- Medium blue: the sections are displaying face-up in the view pane.
- Light blue: the sections that are not displaying on the view pane.
 - Click the section to open and document.

Once the documentation has been signed, additional icons will display in the navigator.

- Indicates data has been charted.
- Indicates critical value has been charted.



Interactive View Tips for Nursing Assistants for Nursing Assistants

Cerner PowerChart EDUCATION

View Pane

The view pane is where data is entered into IView. All data is organized chronologically with a date and time stamp.

- Data will display in black once signed.
- Data outside of patient norms will be color coded based on the labels located in the IView filter.
 - Critical values will also display an exclamation mark.
- Data that has been modified will display a blue delta symbol in the lower right corner of the data cell.

Result	Comments	Flag	Date
Vital Signs View			
Temperature Axillary	DegC		
Temperature Oral	DegC	37.5	39.3 !
Temperature Temporal Artery	DegC		
Heart Rate Monitored	bpm	80	85
Pulse Rate	bpm		
Pulse source			
Respiratory Rate	br/min	20	12 Δ
NBP Systolic/Diastolic	mmHg	120/80	130/70
Mean Blood Pressure	mmHg	93	90
Blood Pressure Source			
Blood Pressure Position			

Filters

- Filters can be selected to view specific data.
 - Click the checkbox to call-out data based on filter category.
 - Results will populate, and the value will also highlight in the corresponding cell.

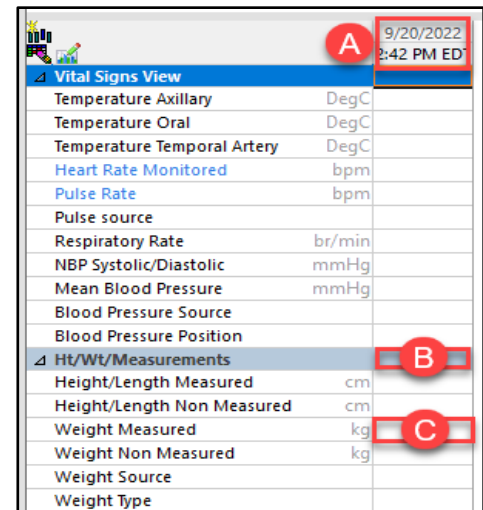
Result	Comments	Flag	Date	Performed By
Vital Signs View				
Temperature Oral			11/14/2022 9:00:00 AM ...	
! 39.3 DegC				
Vital Signs View				
Temperature Axillary	DegC			
Temperature Oral	DegC	36	37.5	39.3 !
Temperature Temporal Artery	DegC			
Heart Rate Monitored	bpm	82	80	85

- The search criteria bar determines the timeframe for data being viewed.
 - This can be changed by right clicking on the search criteria bar, and choosing the desired timeframe.

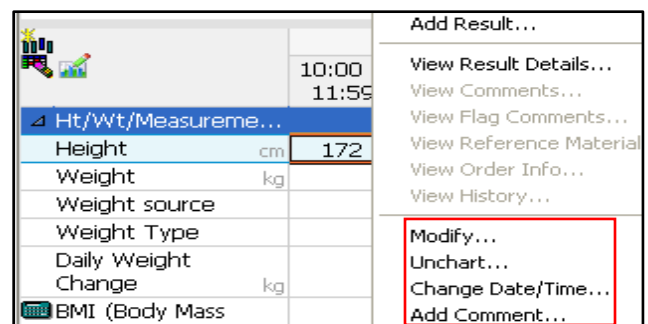
Low Abnormal
 10/12/2022
 10:00 PM EDT 2:50 PM EDT 2:30
 Last 12 Hours
 Low Abnormal
 Last 24 hours
 Last 48 hours
 Last 72 hours
 Admission to Current
 Today's Results
 Other...





Charting in Interactive View

- To chart data:
 - Double click the date/time cell to activate charting for all sections in the band.
 - Double click the blue section header to activate charting for that specific section.
 - Double click a single cell to chart one specific item.



- To un-chart, modify, or correct data in IView:
 - Right click on the cell needing correction, and select the desired action.
 - Add comment when prompted.



- Important icons when charting in IView:
 -  Not used by Nursing Assistants, used to change I&O totals.
 -  Click to change the current date/time of a task in the Nursing Assistant Organizer in IView to reflect the date and time the task was performed.
 -  Click to insert new date/time column for standard charting and back charting.
 - This action can also be completed by right clicking on the time cell of an existing column and choosing "Insert Date/Time".
 -  Click to locate and customize sections for charting that are not displayed face-up in the navigator.
 - When clicked, a new window will open that allows the user to search sections by scrolling or with the text to search box.

