

CareAdmin: Contact your System Administrator regarding Device Location Alert

for Nurses

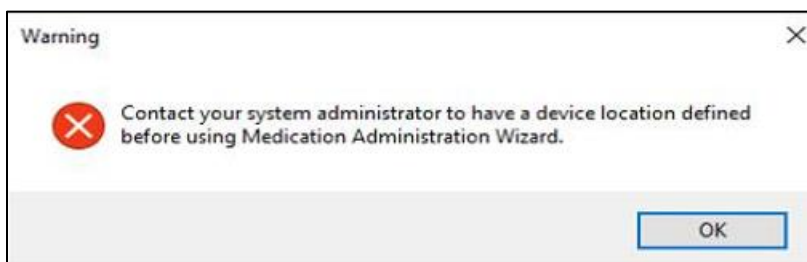
Cerner PowerChart EDUCATION

Contact your System Administrator to have a Device Location Defined


1. The nurse is scanning the patient from the Organizer (PAL, LaunchPoint, Task List) level and receives this alert.

Or

2. The nurse is correctly scanning the patient from the patient's chart and receives this alert.



Solution #1:

1. Close the alert.
2. Open the patient's chart.
3. Click the Medication Administration button.  Medication Administration
4. Scan the patient using two patient identifiers: Name and Date of Birth.

Solution #2:

1. The device and/or computer needs to be entered in WTS (Windows Terminal Service).
2. Contact the Help Desk to have device/computer updated.