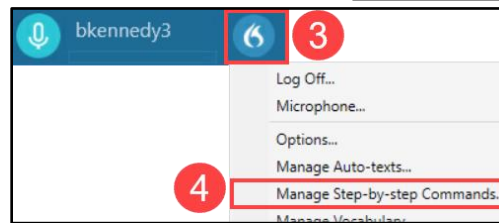
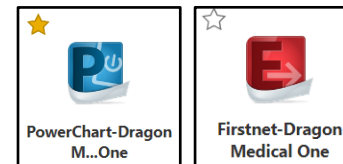


Manage Step-by-step Commands

A Step-by-step Command is used to execute a series of predefined actions by saying a key phrase into the Dragon Medical One (DMO) microphone. Step-by-step Commands can be customized to perform a variety of functions, such as inserting a Cerner Auto Text from PowerChart or FirstNet.

To set up Step-by-step Commands:

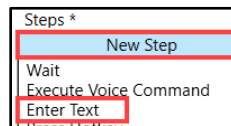
1. Open the combined PowerChart-Dragon Medical One app or FirstNet-Dragon Medical One app in the Citrix Workspace.
2. Click OK on the DMO login screen to login.
3. Click the DragonBar Menu (blue flame).
4. Select **Manage Step-by-step Commands**.



5. Click the + sign.
6. Complete the **Name** field. This field should start with a command word (i.e., insert) that DMO will recognize to perform the command action.

- a. Observe that DMO automatically entered the text from the Name field into the Spoken form field. **DO NOT** change the text as these fields need be the same.

7. In the Steps field, click on **New Step** and select **Enter Text**.



8. In the Enter Text field, type the name of an Auto Text **EXACTLY** how it is named in PowerChart or FirstNet, including the period and user's initials.

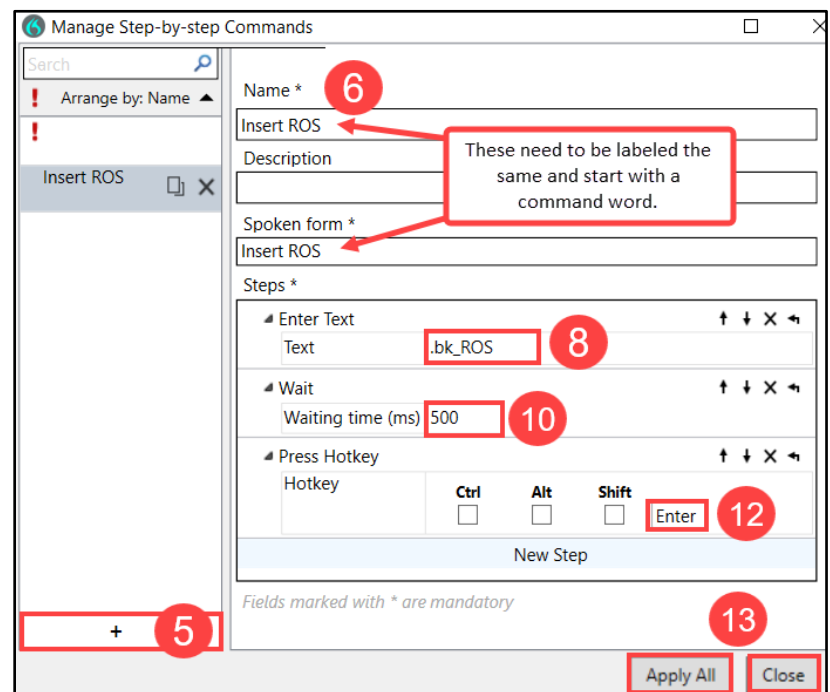
- a. **Note:** If the Auto Text from PowerChart or FirstNet is misspelled in any way, the Step-by-step Command will not work.

9. Click **New Step** again and select **Wait**.
10. In the Wait field, type in **500**.
11. Click **New Step** and select **Press Hotkey**.
12. Click into the Hotkey field and press the **Enter** key on the keyboard. The word Enter will display in the Hotkey field.

- a. **Note:** The word Enter cannot be typed into the field, the Enter key must be pressed on the keyboard.

13. Click **Apply All**, and then click **Close**.

14. Repeat steps 5 – 13 to set up a Step-by-step Command for all Cerner Auto Text created in PowerChart or FirstNet.



DMO Step-By-Step Commands for Providers and Dragon Users

Nuance Dragon Medical One EDUCATION

Using a Step-by-step Command

After completing the steps above:

1. Open a patient's chart and place the cursor in a free text component.
2. Press and hold the red record button on the PowerMic and say the name of the Step-by-step Command that was created using the steps above (i.e., Insert ROS).
3. Observe the Cerner Auto Text from PowerChart or FirstNet (i.e., .bk_ROS) automatically being typed into the free text component and the text from that Cerner Auto Text displays.

