

FIRST FLOOR CURVED BULKHEADS



**Jared Andersen**  
Project Manager

### CONSTRUCTION UPDATE

A short drive through the Munson Healthcare – Manistee campus this past month may have given the impression we are reconstructing everything! Our team has re-engaged the sitework now that the sun is shining and paving can commence. The large amount of disruption to traffic flow to both patients and staff are unfortunately necessary to provide what will be a beautiful new landscape. New entrances, additional parking, and better functionality are all to come throughout the summer months.

For the new Medical Office Building, progress continues at full speed. Interior mechanical systems are wrapped up on the second floor and have moved to the first. Door frames and backing for future wall mounted items have also been installed. Exterior brick is underway in attempt to hide the lime green backer panel that has been present on the facade for several months. The brick will move quickly and begin to show the final exterior skin of the building. Exciting progress to come as summer draws closer!

**Jared Andersen, Project Manager**  
JaredA@elzinga-volkers.com

### FUN FACT

Brick is one of the oldest building materials still used every day in construction. The basic process of making these bricks is still very much the same as it was thousands of years ago. This clay based material is heated to extreme temperatures to create this durable building product. A mere 8 million bricks were used to construct The Great Wall of China only 2,200 years ago!



## LOOKING AHEAD

**Dan Blamer, Field Manager**  
 danb@elzinga-volkers.com | 231-299-7528

Sitework around the campus has resumed once again, and with the completion of the west entrance, focus will be shifting to the employee parking lot and the service drive behind the new MOB. While this is taking place, masonry will begin on the south wall of the building, wrapping around the sides and working north. Exterior glass and glazing will also begin with window frames being installed on the second floor and glass following afterwards. Once the employee lot is completed, sitework will shift to the area north of the new MOB, allowing for the installation of the new storm water system, curb, sidewalk, and parking lot.

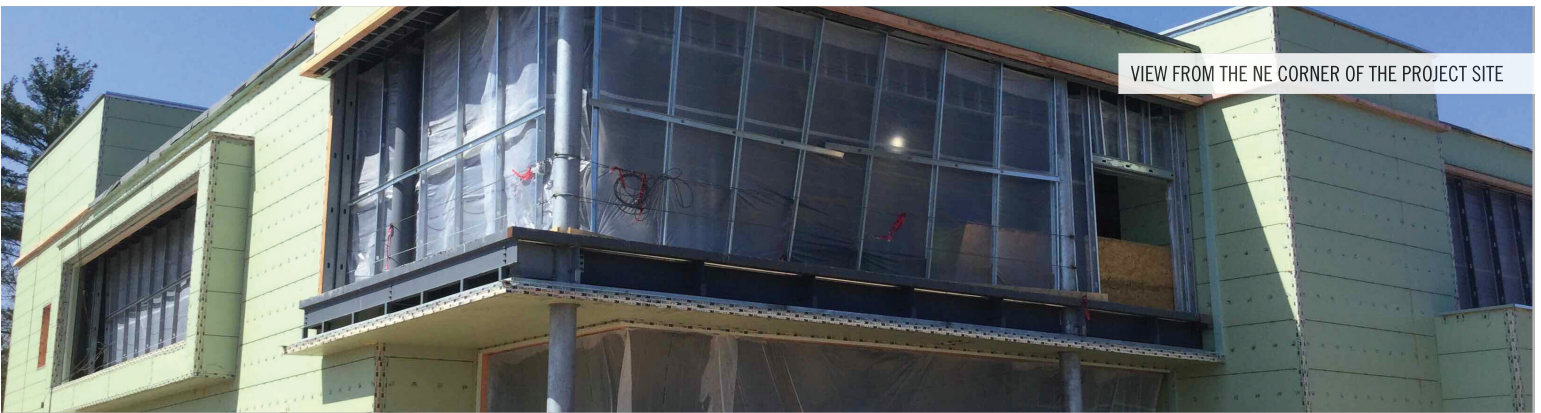


## SITWORK EQUIPMENT

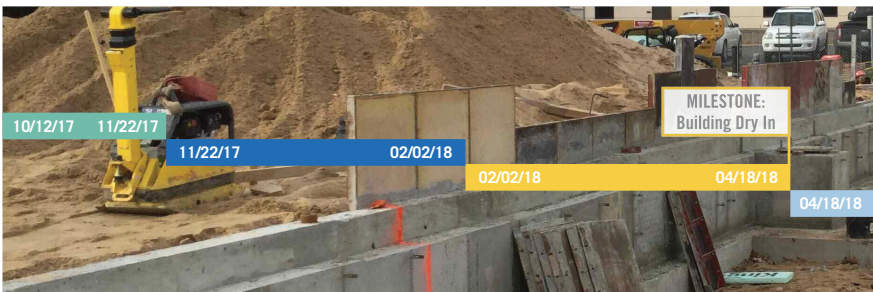
Paving requires very heavy equipment and skilled equipment operators. During the campus repaving, you will notice that a variety of safety procedures are in place to ensure residents, staff and visitors around the site are protected during this work. We are using high visibility clothing, traffic control signage as needed and, of course, the orange barrels that we are all used to seeing on the highway to keep the campus safe. Be careful as you walk campus in the next few weeks, but even if you forget about the work going on, we certainly will be watching out for you!



Architectural Metals, Inc. has recently completed their work on the insulated metal panel system on the exterior of the building, and their skill and craftsmanship is on display for all to see. These panels are what keeps the majority of the building watertight, and Terry, AMI's foreman, has an excellent eye for avoiding future problems with moisture. When the time comes for installation of the composite metal finish panels, we look forward to having AMI back onsite.



## TRACK THE PROJECT'S PROGRESS AS THE VIEW TAKES SHAPE!



Footings & Foundations

Steel & Framing

Exterior Shell

Interior Finishes

Final Inspections & Cleaning