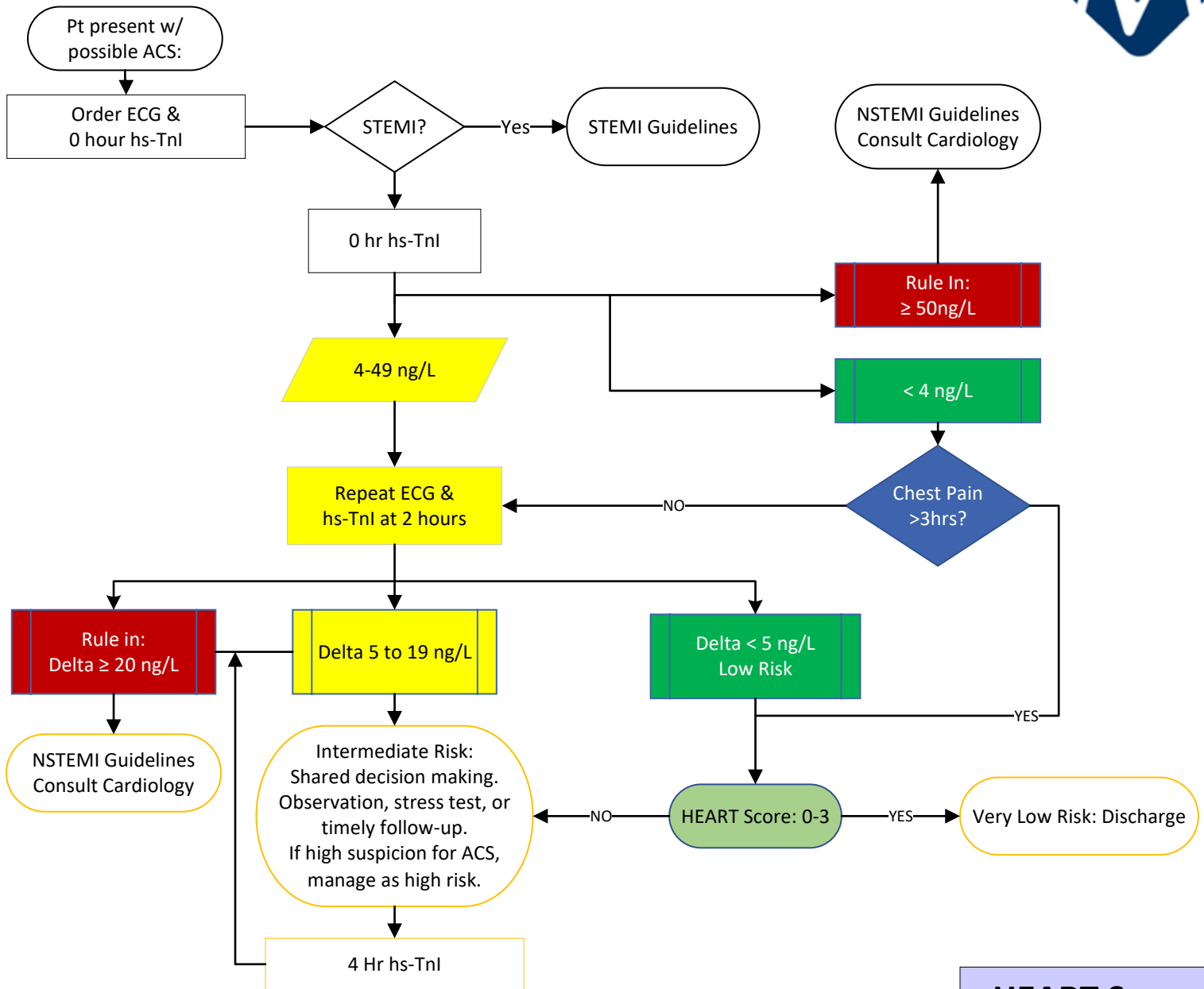


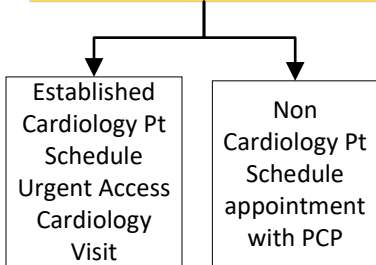
MHC High-Sensitivity Troponin (hs-TnI)



**HEART Score >7
High Risk
(50-65% 30 day MACE rate)
Consider hospitalization and
Cardiology Consult**

**HEART Score 4-6
Intermediate Risk
(12-16.5% 30 day MACE rate)
Timely follow-up or
Observation**

**HEART Score 0-3
Low Risk
(0-1% 30 day MACE rate)
Stress Test or Hospitalization not
recommended. Discharge Patient**



| HEART Score | |
|-----------------------------------|-----------|
| HISTORY⁽¹⁾ | |
| Mostly high-risk features | 2pt |
| Mix of high & low features | 1pt |
| Mostly low-risk features | 0pt |
| ECG⁽²⁾ | |
| Significant ST Deviation | 2pt |
| Non-specific Change | 1pt |
| Normal | 0pt |
| AGE | |
| ≥ 65 years | 2pt |
| 45-64 years | 1pt |
| <45 years | 0pt |
| RISK FACTORS⁽³⁾ | |
| History of atherosclerotic dx | 2pt |
| OR | |
| ≥ 3 Risk Factors | 2pt |
| 1-2 Risk Factors | 1pt |
| 0 Risk Factors | 0pt |
| TOTAL SCORE | _____ pts |

99th Percentile URL of Healthy Population = 18 ng/L