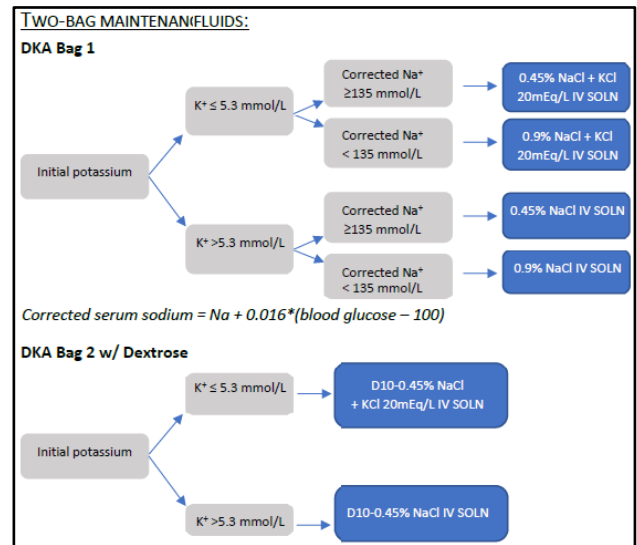
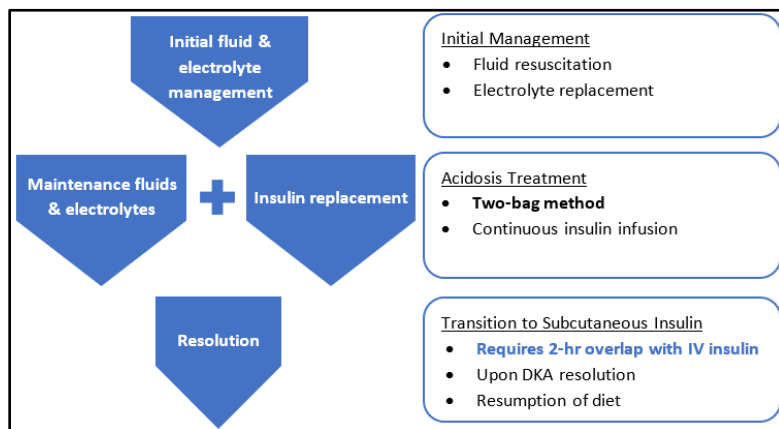


## DKA Two-Bag Method Summary

The two-bag system is an approach to DKA management that uses two maintenance fluid solutions (one WITH and one WITHOUT dextrose), allowing insulin to run at a set rate.

Standard nomenclature for the naming of Bag 1 and Bag 2 on labels and smart pump infusion devices:

- Bag 1: DKA Bag 1
- Bag 2: DKA Bag 2 w/Dextrose



**Note:** DKA Bag 1 and DKA Bag 2 w/Dextrose are connected to two different IV pumps and connected to each other via a Y-site to be administered through one IV line.

## Adult DKA PowerPlan

1. Search for and select the Adult DKA PowerPlan.
  - a. [Reference Text](#) is also included in this PowerPlan.

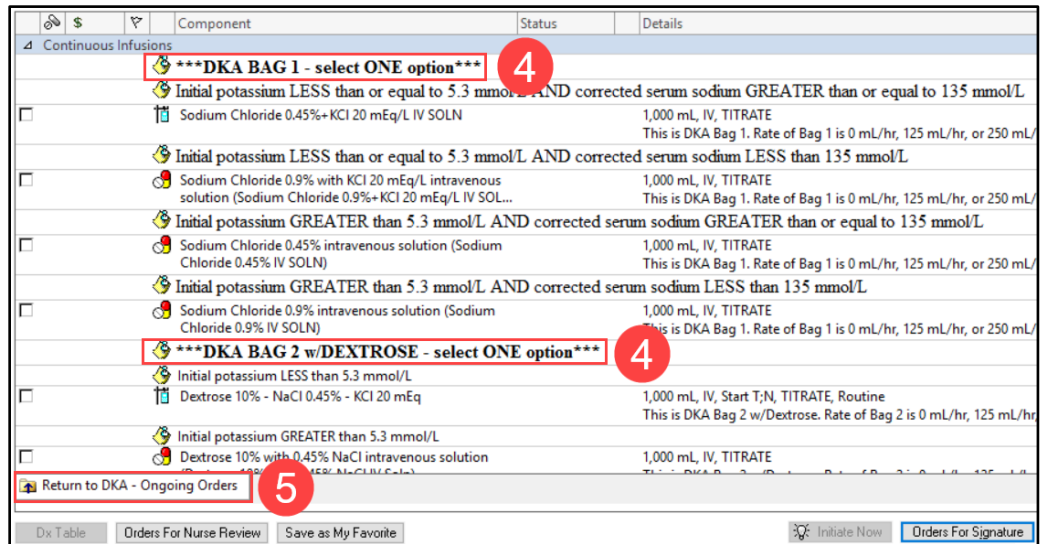
The screenshot shows the 'Orders' screen in an EHR system. The 'Medical' section is expanded to show 'Adult DKA' with a red circle '1' next to it. The 'Patient Care' section is also expanded, showing a list of tasks with a red circle 'a' next to the 'DKA IV Glucose Management' task. The 'Details' column for this task contains the text '\*\*\*See Reference text\*\*\*'.

**Note:** This PowerPlan should NOT be utilized for patients under the age of 18 years old.

2. Check and uncheck orders within the PowerPlan, as needed.
3. Select the DKA 2-bag System – STANDARD FLUIDS or DKA 2-bag System – FLUID RESTRICTION.

The screenshot shows the 'Medication List' section of the EHR. It displays several orders related to the DKA 2-bag system. A red circle '2' is next to the 'Sodium bicarbonate (Sodium Bicarb IVPush)' order, and a red circle '3' is next to the 'DKA 2-bag System - STANDARD FLUIDS' and 'DKA 2-bag System - FLUID RESTRICTION' orders. The 'Details' column for the DKA 2-bag system orders contains the text: 'Select DKA Bag 1 and DKA Bag 2 w/Dextrose from subphase based on fluid rate, potassium, and corrected sodium. Corrected serum sodium =  $[Na + 0.016 * (BG - 100)]$ '.

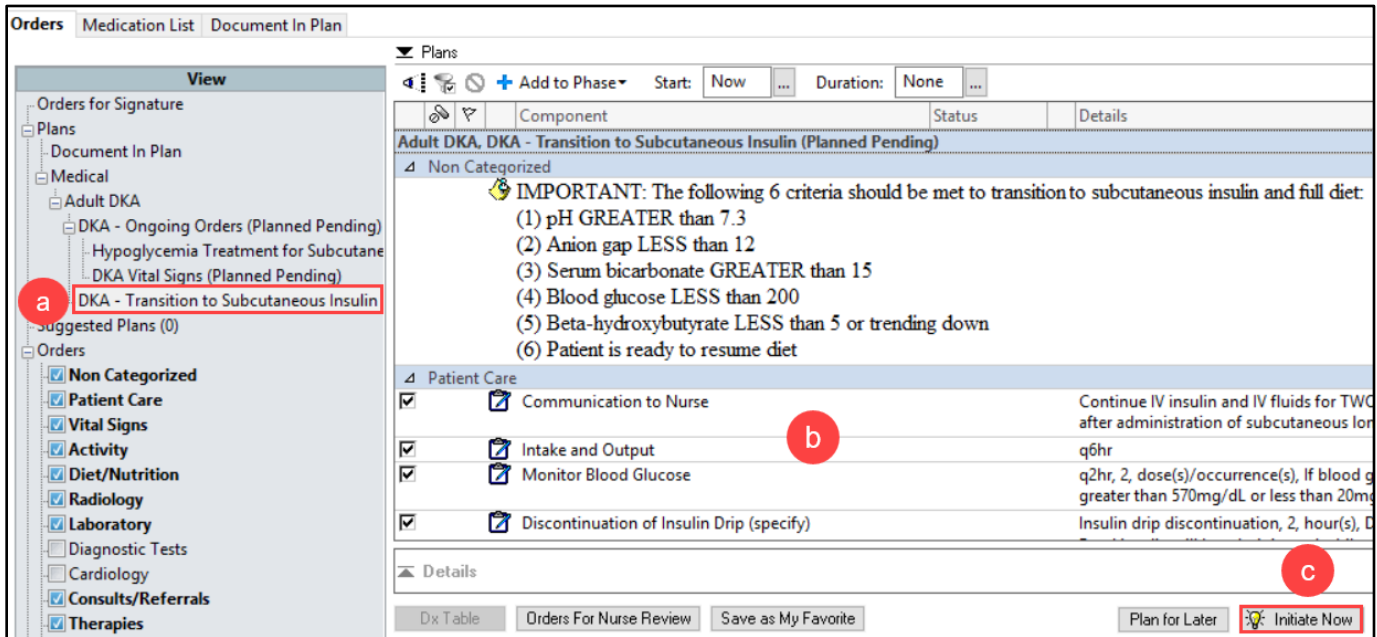
4. Within the DKA 2-bag System subphase, select 1 option for DKA BAG 1 and select 1 option for DKA BAG 2 w/DEXTROSE.
5. Click Return to DKA – Ongoing Orders to return to the PowerPlan.



6. Once the patient is ready to transition to the long-acting subcutaneous insulin, the DKA – Transition to Subcutaneous Insulin subphase of the Adult DKA PowerPlan will need to be ordered.
  - a. Select the subphase.
  - b. Check and uncheck orders within the subphase, as needed.
  - c. Click Initiate Now to sign the orders.

Long-acting subcutaneous insulin (e.g., insulin glargine) is NOT immediately active and requires time to absorb into the bloodstream. Patients recovering from DKA must continue IV insulin until the subcutaneous product is working.

IV insulin and IV fluids MUST continue for TWO hours after administration of subcutaneous long-acting (basal) insulin to prevent relapse back into DKA.



**Note:** The Adult DKA PowerPlan can be discontinued once the patient is no longer on IV insulin and IV fluids. Nursing is tasked to discontinue the IV two hours after administration of the first dose of basal insulin.