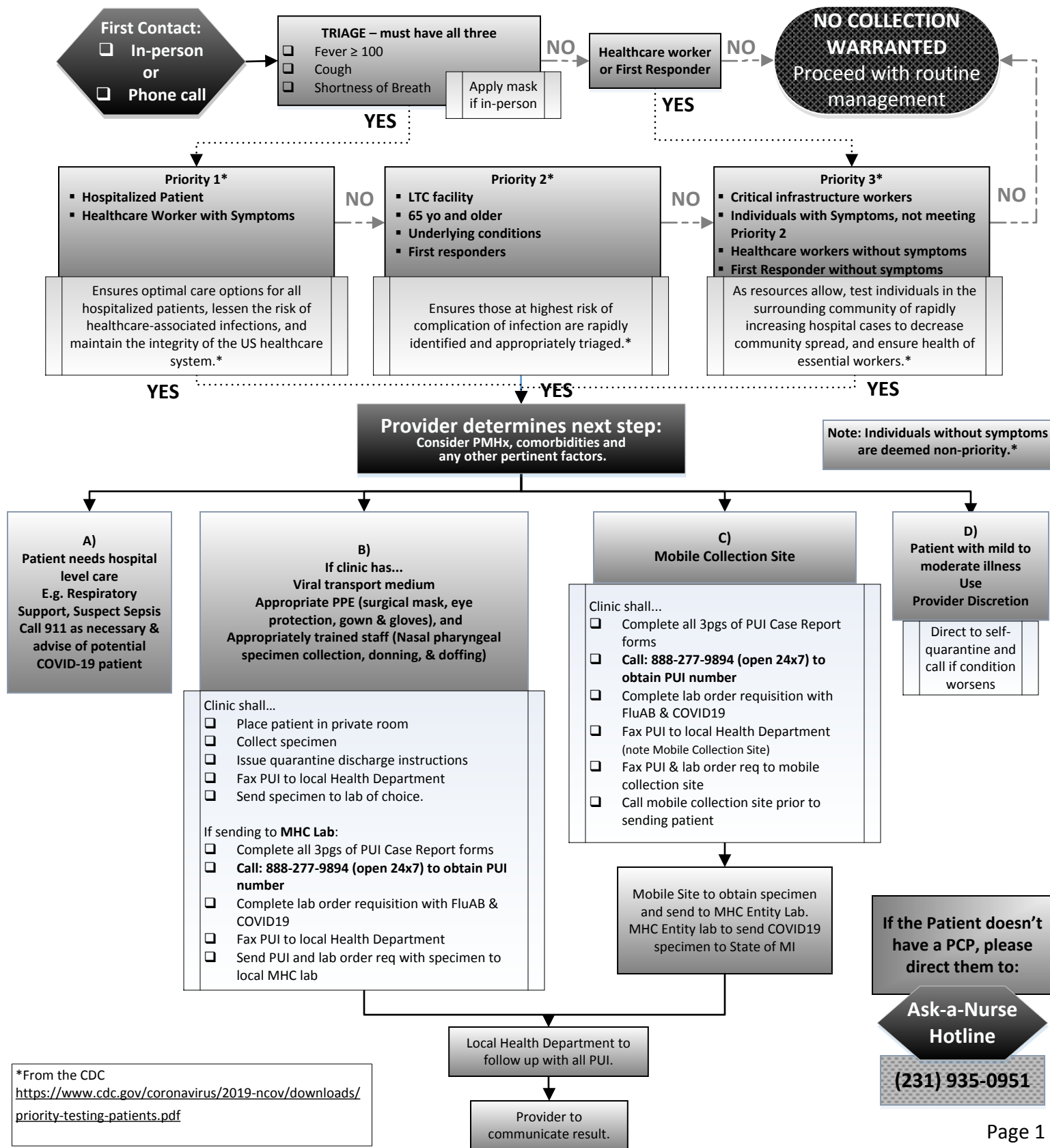


Purpose: This is a workflow to give community providers guidance on how to coordinate specimen collection for suspected COVID-19 patients

The number of available tests is limited. Diagnostic stewardship is essential to ensure that the patients at greatest need are tested. We do not recommend testing of patients with mild disease, who can safely recover at home, or those with a potential exposure but no active symptoms. From Infectious Disease Providers Guidance



**MOBILE COLLECTION SITES:**

**Cadillac**

Cadillac Hospital-ED Parking Lot  
400 Hobart St, Cadillac, MI 49601  
(P) 231-876-7200 (F) 231-876-7802  
Hours of Operation: 9a-4:30p every day

**Charlevoix**

At old Charlevoix Elementary School  
13513 Division Street  
(P) 231-547-8858 (F) 231-547-8080  
Hours for Call Center: 7a-7p every day

**Frankfort**

Paul Oliver-Outside the ED, drive up to the EMS entrance  
224 Park Avenue, Frankfort, MI 49635  
(P) 231-352-2380 (F) 231-352-2234  
Hours of Operation: M-F 8a-10a & 2p-4p

**Grayling**

Grayling Building D  
1250 Michigan Ave, Grayling, MI 49738  
(P) 989-348-0989 (F) 989-344-5874  
Hours of Operation: M-F 10a-6p; Sat 9a-3p

**Manistee**

Manistee Hospital, back of the building, yellow tent  
1465 E Parkdale, Manistee, MI 49660  
(P) 231-398-1415 (F) 231-398-1443  
Hours of Operation: 9a-6p every day

**Otsego**

White House across the street from the hospital  
651 N. Otsego Ave, Otsego, MI 49735  
(P) 989-731-6641 (F) 989-731-7912  
Hours of Operation: M-F 9a-5p; S-S 10a-2p

**Prudenville**

Prudenville Specialty Clinic  
2585 W Houghton Lake, Prudenville, MI 48651  
(P) 989-366-2900 (F) 989-366-2917  
Hours of Operation: M-F 11a-6p; Sat 9a-3p

**Traverse City**

Foster Family Community Health Center Parking Lot  
550 Munson Ave, Traverse City, MI 49684  
(P) 231-935-9269 (F) 231-392-7355  
Hours of Operation: 10a-2p every day

**Health Department Phone Numbers:**

Grand Traverse.....  
(P) 231-409-4731 (F) 231-995-6126

Benzie/Leelanau.....  
(P) 231-633-9544 (F) 231-882-0143

Northwest Michigan.....  
(Antrim, Charlevoix, Emmet, Otsego)  
(P) 800-432-4121 (F) 231-547-6238

District 10.....  
(Counties; Crawford, Kalkaska, Lake,  
Manistee, Mason, Mecosta, Missaukee,  
Newaygo, Oceana, Wexford)  
(P) 231-878-0684 (F) 231-903-4902

Central Michigan.....  
(Arenac, Clare, Gladwin, Isabella, Osceola,  
Roscommon)  
(P) 989-289-6445 (F) 231-832-1020