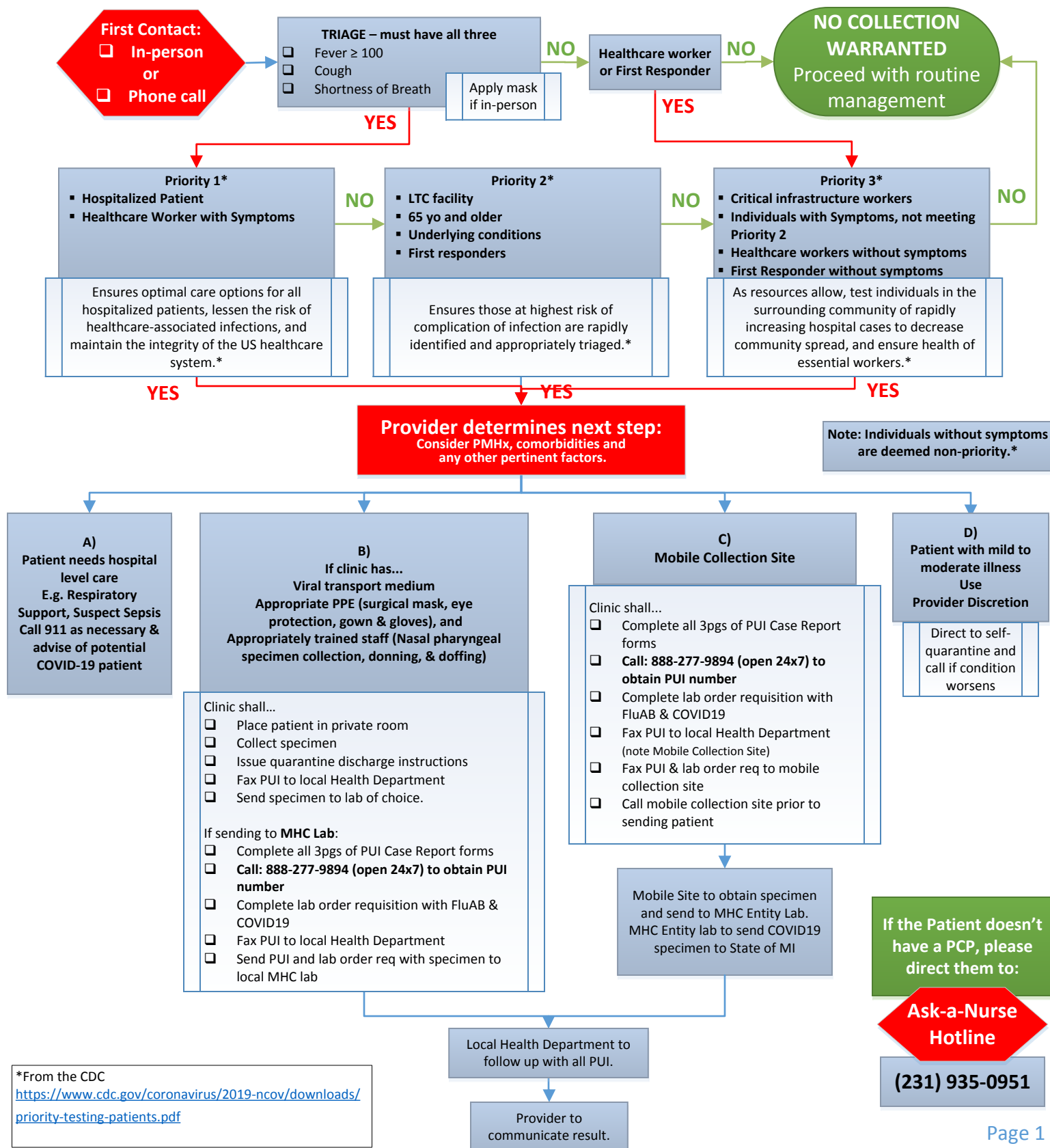


Purpose: This is a workflow to give community providers guidance on how to coordinate specimen collection for suspected COVID-19 patients

The number of available tests is limited. Diagnostic stewardship is essential to ensure that the patients at greatest need are tested. We do not recommend testing of patients with mild disease, who can safely recover at home, or those with a potential exposure but no active symptoms. From Infectious Disease Providers Guidance



*From the CDC
<https://www.cdc.gov/coronavirus/2019-ncov/downloads/priority-testing-patients.pdf>

MOBILE COLLECTION SITES:

Cadillac

Cadillac Hospital-ED Parking Lot
400 Hobart St, Cadillac, MI 49601
(P) 231-876-7200 (F) 231-876-7802
Hours of Operation: 9a-4:30p every day

Charlevoix

At old Charlevoix Elementary School
13513 Division Street
(P) 231-547-8858 (F) 231-547-8080
Hours for Call Center: 7a-7p every day

Frankfort

Paul Oliver-Outside the ED, drive up to the EMS entrance
224 Park Avenue, Frankfort, MI 49635
(P) 231-352-2380 (F) 231-352-2234
Hours of Operation: M-F 8a-10a & 2p-4p

Grayling

Grayling Building D
1250 Michigan Ave, Grayling, MI 49738
(P) 989-348-0989 (F) 989-344-5874
Hours of Operation: M-F 10a-6p; Sat 9a-3p

Manistee

Manistee Hospital, back of the building, yellow tent
1465 E Parkdale, Manistee, MI 49660
(P) 231-398-1415 (F) 231-398-1443
Hours of Operation: 9a-6p every day

Otsego

White House across the street from the hospital
651 N. Otsego Ave, Otsego, MI 49735
(P) 989-731-6641 (F) 989-731-7912
Hours of Operation: M-F 9a-5p; S-S 10a-2p

Prudenville

Prudenville Specialty Clinic
2585 W Houghton Lake, Prudenville, MI 48651
(P) 989-366-2900 (F) 989-366-2917
Hours of Operation: M-F 11a-6p; Sat 9a-3p

Traverse City

Foster Family Community Health Center Parking Lot
550 Munson Ave, Traverse City, MI 49684
(P) 231-935-9269 (F) 231-392-7355
Hours of Operation: 10a-2p every day

Health Department Phone Numbers:

Grand Traverse.....
(P) 231-409-4731 (F) 231-995-6126

Benzie/Leelanau.....
(P) 231-633-9544 (F) 231-882-0143

Northwest Michigan.....
(Antrim, Charlevoix, Emmet, Otsego)
(P) 800-432-4121 (F) 231-547-6238

District 10.....
(Counties; Crawford, Kalkaska, Lake,
Manistee, Mason, Mecosta, Missaukee,
Newaygo, Oceana, Wexford)
(P) 231-878-0684 (F) 231-903-4902

Central Michigan.....
(Arenac, Clare, Gladwin, Isabella, Osceola,
Roscommon)
(P) 989-289-6445 (F) 231-832-1020