

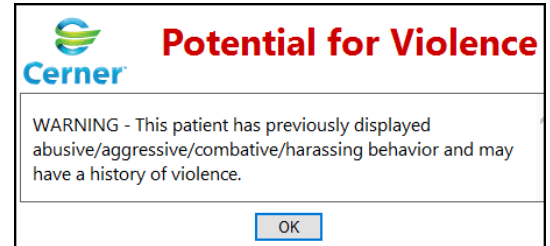
# Potential for Violence Alert Documentation for Clinical Staff & Clerical Staff

## Cerner PowerChart Ambulatory EDUCATION

### Potential for Violence Alert

The following Potential for Violence alert will pop up when opening a patient's chart on all Ambulatory encounters if any of the following Patient Care Alerts are documented within PowerChart:

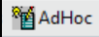
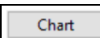
- Abusive behavior
- Aggressive behavior
- Combative
- Harassing behavior
- Potential/History of Violence



This alert will fire one time per day per person opening the chart. Review and update as needed.

Potential for Violence documentation must be documented or updated by a clinical staff member.

### Documenting or Reviewing Potential for Violence

1. Click  on the top toolbar in PowerChart.
2. Select **Patient Care Alerts-Amb.**
3. Click **Chart.** .
4. Select the appropriate Special Needs. **Note: Multiple selections may be made. Selections will be saved until deselected.**
  - a. Clinical staff will use judgment to determine if the patient continues to have the previously documented behaviors or history of violence. If determined that the previously documented behaviors or history of violence no longer applies, the clinical staff may deselect the special need by unchecking the box.
5. A new selection of the indicated potential for violence Patient Behaviors will open the Potential for Violence Behavior Plan.
6. Document behavior as needed.



### Potential for Violence Behavior Plan

**For Reference Purposes Only - All Encounters**  
**Reason(s) the patient has potential for violence (hx of violence, behaviors this admission, nursing judgment)**

Reason Pt. has Potential for Violence. Pt upset in waiting room, yelling and screaming at staff. (09/28/23 13:24:00) Information previously entered will show.

**Reason(s) the patient has potential for violence (hx of violence, behaviors this admission, nursing judgment)**

Enter information as needed.

**For Reference Purposes Only - All Encounters**  
**What triggers the patient's behavior?**

Triggers for Patient Violent Behavior. Long wait times (09/28/23 13:24:00)

**Reviewed Potential for Violence Behavior Plan**

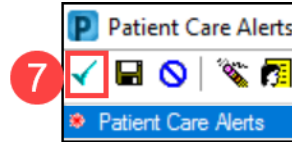
Reviewed, changes documented  
 Reviewed, no changes

Only available to select if this form has been filled out on the current encounter.

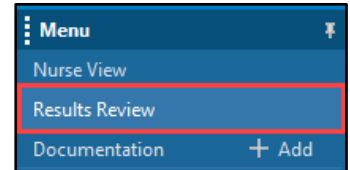
## Potential for Violence Alert Documentation for Clinical Staff & Clerical Staff

### Cerner PowerChart Ambulatory EDUCATION

7. Click the green checkmark to sign the PowerForm.



- The information recorded on the Potential for Violence Behavior Plan can be viewed in the Results Review section of the patient's chart.



Potential for Violence documentation added on **hospital** encounters will **NOT** cross to ambulatory encounters.

Potential for Violence documentation added on **Ambulatory** encounters **WILL** cross to subsequent Ambulatory encounters until removed by clinical staff.